

RETAIL/RESTAURANT

ONE EAST HARLEM

201 East 125th Street located between Second and Third Avenues

EAST HARLEM
MANHATTAN | NY

17,047 SF

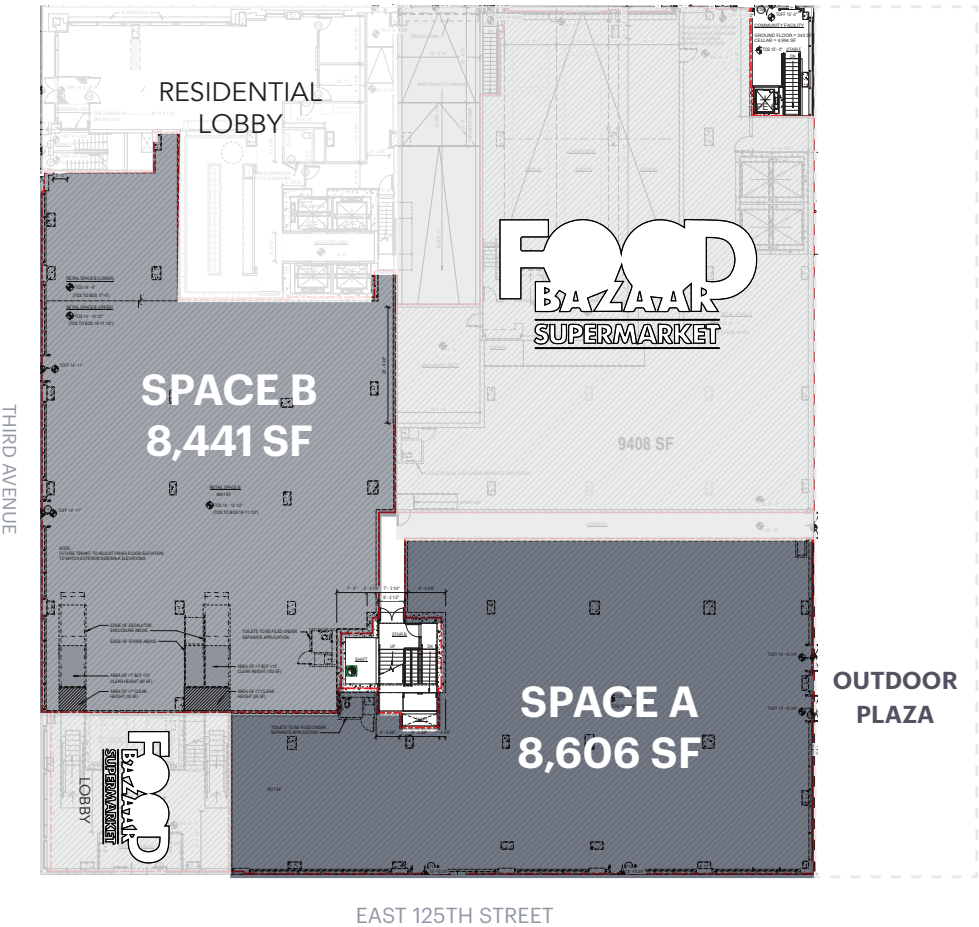
Available for Lease



RIPCO
REAL ESTATE

SPACE DETAILS

GROUND FLOOR



LOCATION

North side of East 125th Street
between Second and Third Avenues

SIZE

Space A
Ground Floor 8,606 SF

Space B
Ground Floor 8,441 SF

FRONTAGE

125th Street 178 FT
Third Avenue 19 FT 8 IN

CEILING HEIGHTS

Ground Floor 16 FT
Second Floor 17 FT

ASKING RENT

Upon request

CURRENTLY

Under construction, possession
2021

NEIGHBORS

Food Bazaar (opening summer
2021), Modell's, The Children's
Place, Footaction, GNC, Duane
Reade, Apple Bank

Adjacent to 233 unit Blumenfeld
residential development and NY
Proton Cancer Therapy Center
collaboration of (Memorial Sloan
Kettering, Montefiore, Mount Sinai,
ProHealth)

COMMENTS

Outreach to community
stakeholders including Council
Member Ayala's office, Manhattan
Community Board 11 and the
East 125th Street Development
Task Force

Join new Food Bazaar (45,000 SF)
opening in 2021

At base of new 400 unit residential
building

120 below grade parking spaces

1 block from the 4, 5 and 6 subway
trains and new connection to 2nd
Avenue subway

2 blocks from FDR on/off ramp and
RFK Triboro Bridge

Venting in place on ground floor

Reasonable ground floor divisions
considered

TRANSPORTATION

2019 Ridership Report

125th Street/Lexington 4 5 6

Annual 8,554,857

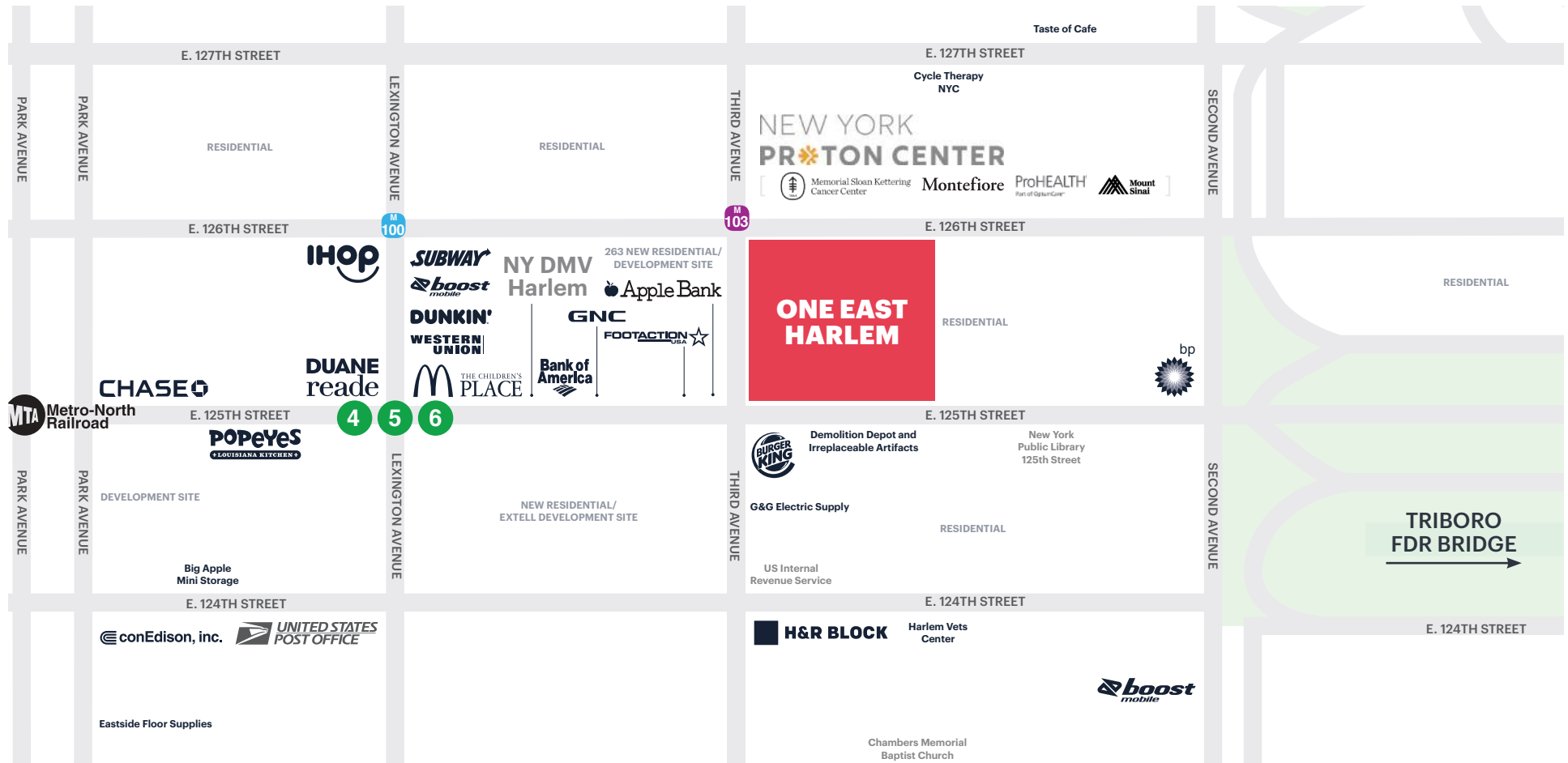
Weekday 27,231

Weekend 29,884

GROUND FLOOR DIVISION PLANS | TENANT 1-10



AREA RETAIL



CONTACT EXCLUSIVE AGENTS

JASON PENNINGTON

jpennington@ripcony.com
718.233.6565

JESSICA HEDRINGTON

jhedrington@ripcony.com
718.233.6565

RIPCO
REAL ESTATE

32 Court Street
10th Floor
Brooklyn, NY 11201
718.233.6565

Please visit us at ripcony.com for more information

This information has been secured from sources we believe to be reliable, but we make no representations as to the accuracy of the information. References to square footage are approximate. Buyer must verify the information and bears all risk for any inaccuracies.